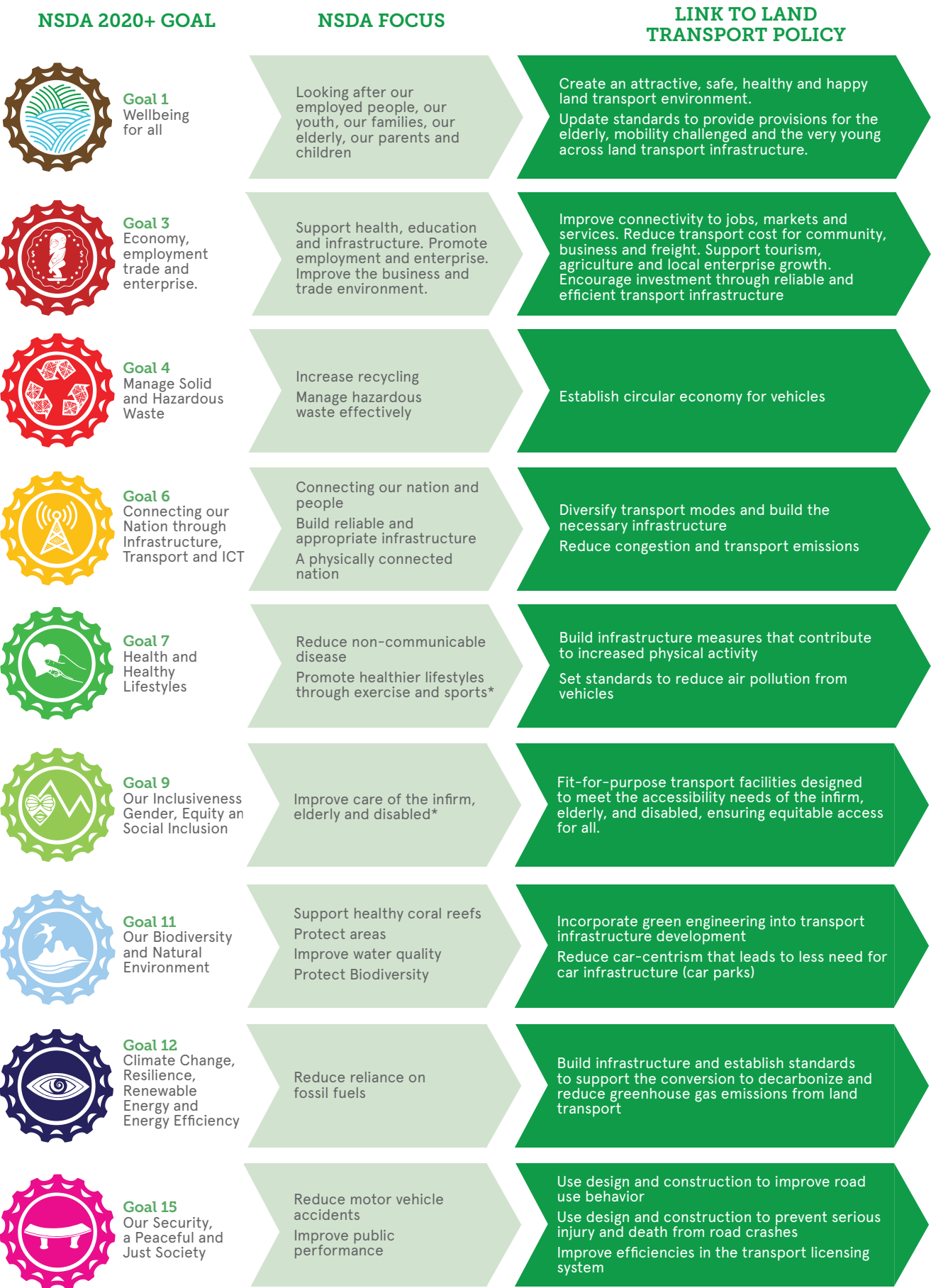


NATIONAL SUSTAINABLE DEVELOPMENT AGENDA 2020+
Linkages to the Land Transport Policy



Cook Islands Land Transport Policy 2025 - 2035

Government of the Cook Islands

Land transport in the Cook Islands plays a vital role in connecting people, services, and opportunities. It supports wellbeing, enables economic activity, and links communities in Rarotonga and on respective inhabited islands of the Pa Enua.

The sector faces growing challenges — aging infrastructure, rising vehicle numbers, limited transport options, inconvenient access to public transport services, and increasing climate impacts. Without modernisation, the land transport system cannot meet future demands or deliver on national resilience and sustainability goals. Our landtransport system needs to align to advancing the national vision of “Turanga

Memeitaki no te Katoatoa – Wellbeing for All” as outlined in the National Sustainable Development Agenda 2020+.

This summary presents the Cook Islands Land Transport Policy 2025–2035: our unified national vision and strategic direction for the land transport sector over the next decade.

DEFINITION: LAND TRANSPORT

Land transport refers to the movement of people, goods, and services on land — and the systems that support it.

OUR VISION

Safe, Sustainable Journeys Across our Nation

By 2035, the Cook Islands will have modernised its land transport laws and embedded climate resilience and inclusion into all new road construction. The shift toward electric, hybrid, and shared transport will be supported by enabling infrastructure and regulation. Walking, cycling, and public transport will be more accessible and widely used. Road safety will be significantly improved through better design, awareness, and enforcement. All Pa Enua will have tailored land transport plans, supporting a safer, low-emission, and inclusive transport system for every island.

OUR POLICY DIRECTION

FOCUS	TARGET
Legislative Reform	Full legal modernisation.
Sustainable Transport	Promote an increase in the share of electric, hybrid vehicle use, public and shared transport modes supported by enabling infrastructure and regulation.
Climate-Resilient Roads	Embed climate resilience and risk-reduction measures into the design and construction of all new roads.
Active Transport	Increase the use of walking and cycling across all islands, supported by safe, accessible infrastructure
Road Safety	Aim for zero road incidents /crash-related deaths and a reduction in the number of serious injuries.
Pa Enua Access and Equity	All of Pa Enua with land transport plans.

OUR TIMELINE

This policy covers the period from 2025 to 2035 (10 years).The progress of the policy implementation will be monitored and evaluated on the following basis:



OUR POLICY PILLARS

The Policy will be delivered through four key policy pillars that align with national development priorities, climate resilience goals, and international obligations. The Ministry of Transport will drive delivery of the Policy's four pillars' objectives and action areas in partnership with public sector agencies, the private sector and community stakeholders. Delivering these objectives will require shared leadership, aligned systems, and

targeted investment. Strengthening institutional roles, improving resource use, and clarifying responsibilities will be critical to delivering safe, reliable, affordable, inclusive, climate-resilient land transport for all residents and visitors in the Cook Islands.



Leadership and Governance

Establish a clear legislative and operational framework for land transport by strengthening institutional roles, formalising leadership, and improving coordination to deliver efficient, accountable, and nationally consistent services.

2027



FULL LEGAL MODERNISATION

- Clarify mandates under updated legislation.
- Improve efficiency through collaboration across government agencies.
- Strengthen regulatory functions to align with NSDA 2020+ Goal 15 and build public sector capability.



- Goal 1: Wellbeing for all.
- Goal 3: Economy, employment trade and enterprise.
- Goal 6: Connect our nation through infrastructure, transport, and ICT.
- Goal 9: Our Inclusiveness - Gender, Equity and Social Inclusion.
- Goal 15: Our security, a peaceful and just society.



Sustainability and Climate Resilience

Promote affordable and accessible low-emission transport, reduce private vehicle dependency, and build a climate-resilient land transport system that protects people, infrastructure, and the environment.

2026

NEW ROADS CLIMATE PROOF

2030

INCREASE IN EV OR HYBRID IMPORTS

2035

INCREASE IN SHARE OF EV & SHARED TRANSPORT USE

- Promote low-emission transport and establish support systems.
- Encourage a shift towards walking, cycling, and public transport.
- Feasibility study for subsidised access to public transport on Rarotonga for all residents and visitors.
- Integrate climate adaptation measures into transport infrastructure design and maintenance.



- Goal 1: Wellbeing for all.
- Goal 4: Manage solid and hazardous waste.
- Goal 6: Connecting our nation through infrastructure, transport and ICT.
- Goal 7: Health and healthy lifestyles.
- Goal 9: Our Inclusiveness - Gender, Equity and Social Inclusion.
- Goal 11: Biodiversity and natural environment.
- Goal 12: Climate change, resilience, renewable energy and energy efficiency.



Road Safety

Reduce road crash fatalities and injuries through safer infrastructure, effective enforcement, and sustained public awareness and evidence-based decision making.

2035



ZERO DEATHS & SERIOUS INJURIES

- Strengthen official statistics bulletins for motor vehicles information.
- Strengthen public education, awareness, and law regulatory and enforcement initiatives.
- Improve infrastructure design standards to enhance road safety.
- Prioritise the safety of vulnerable users, including pedestrians, cyclists, children, and the elderly.



- Goal 6: Connecting our nation through infrastructure, transport and ICT.
- Goal 7: Health and Healthy lifestyles.
- Goal 9: Our Inclusiveness - Gender, Equity and Social Inclusion.
- Goal 12: Climate change, resilience, renewable energy and energy efficiency.
- Goal 15: Our security, a peaceful and just society.



Pa Enua Access and Equity

Deliver tailored transport solutions and regulations that reflect the needs of the Pa Enua and ensure equitable access across all islands

2028



ALL OF PA ENUA HAVE TRANSPORT PLANS IN PLACE BY 2028

- Strengthen local capacity for transport licensing and road safety management.
- Implement systems for the management and disposal of end-of-life vehicles.
- Invest in infrastructure that is climate-resilient and appropriate to each island's geography and needs.



- Goal 1: Wellbeing for all.
- Goal 6: Connecting our nation through infrastructure, transport and ICT.
- Goal 7: Health and Healthy Lifestyles
- Goal 9: Our Inclusiveness - Gender, Equity and Social Inclusion.
- Goal 11: Our biodiversity and natural environment.
- Goal 12: Climate change resilience, renewable energy and energy efficiency.
- Goal 15: Good Governance and Law Enforcement (local governance and delivery).



Te Mana Tumotu o te Kuki Airani | Ministry of Transport

For the full Cook Islands Land Transport Policy 2025-35 please visit the Ministry of Transport website: mot.information@cookislands.gov.ck

www.transport.gov.ck