

Amendment NR 16

SIGNIFICANT CHANGES

Nil

GEN Section: Significant Changes

Nil

ENR Section: Significant Changes

Nil

AD Section: Significant Changes

Nil

AD 2 Section: Significant Changes

RAROTONGA AD (NCRG)

- ILS/DME or LOC/DME RWY 26 — Republished with nil changes (removes Version 2 label from top of chart)

***INTENTIONALLY
BLANK***

Filing Instructions

AIRAC

AIP COOK ISLANDS

7 NOV 19

Amendment NR 16

REMOVE		INSERT	
GEN		GEN	
GEN 0.4-1	12 SEP 19	GEN 0.4-1	7 NOV 19
GEN 0.4-2	12 SEP 19	GEN 0.4-2	7 NOV 19
GEN 0.4-3	12 SEP 19	GEN 0.4-3	7 NOV 19
GEN 0.4-4	12 SEP 19	GEN 0.4-4	7 NOV 19
GEN 0.4-5	12 SEP 19	GEN 0.4-5	7 NOV 19
GEN 0.4-6	12 SEP 19	GEN 0.4-6	7 NOV 19
GEN 0.4-7	12 SEP 19	GEN 0.4-7	7 NOV 19
GEN 0.4-8	12 SEP 19	GEN 0.4-8	7 NOV 19
AD 2		AD 2	
RAROTONGA (NCRG)		RAROTONGA (NCRG)	
NCRG AD 2-41.1	12 SEP 19	NCRG AD 2-41.1	12 SEP 19
NCRG AD 2-41.2	12 SEP 19	NCRG AD 2-41.2	7 NOV 19

When filing is complete, update GEN 0.2 — Record of AIP Amendments

*INTENTIONALLY
BLANK*

GEN 0.4 CHECKLIST OF AIP PAGES

Page No	Effective	Page No	Effective
GENERAL		GEN 1.2-1	13 SEP 18
GEN 0.1-1	13 SEP 18	GEN 1.2-2	13 SEP 18
GEN 0.1-2	13 SEP 18	GEN 1.2-3	23 MAY 19
GEN 0.1-3	13 SEP 18	GEN 1.2-4	13 SEP 18
GEN 0.1-4	15 DEC 11	GEN 1.2-5	13 SEP 18
GEN 0.1-5	15 DEC 11	GEN 1.2-6	13 SEP 18
GEN 0.1-6	15 DEC 11	GEN 1.2-7	13 SEP 18
GEN 0.2-1	15 DEC 11	GEN 1.2-8	13 SEP 18
GEN 0.2-2	23 MAY 19	GEN 1.3-1	13 SEP 18
GEN 0.3-1	15 DEC 11	GEN 1.3-2	13 SEP 18
GEN 0.3-2	15 DEC 11	GEN 1.3-3	13 SEP 18
GEN 0.4-1	7 NOV 19	GEN 1.3-4	13 SEP 18
GEN 0.4-2	7 NOV 19	GEN 1.4-1	15 DEC 11
GEN 0.4-3	7 NOV 19	GEN 1.4-2	15 DEC 11
GEN 0.4-4	7 NOV 19	GEN 1.5-1	15 DEC 11
GEN 0.4-5	7 NOV 19	GEN 1.5-2	15 DEC 11
GEN 0.4-6	7 NOV 19	GEN 1.6-1	13 SEP 18
GEN 0.4-7	7 NOV 19	GEN 1.6-2	15 DEC 11
GEN 0.4-8	7 NOV 19	GEN 1.7-1	15 DEC 11
GEN 0.6-1	13 SEP 18	GEN 1.7-2	15 DEC 11
GEN 0.6-2	13 SEP 18	GEN 2-1	15 DEC 11
GEN 0.6-3	13 SEP 18	GEN 2-2	15 DEC 11
GEN 0.6-4	23 MAY 19	GEN 2.1-1	15 DEC 11
GEN 0.6-5	13 SEP 18	GEN 2.1-2	23 MAY 19
GEN 0.6-6	8 NOV 18	GEN 2.1-3	23 MAY 19
GEN 0.6-7	8 NOV 18	GEN 2.1-4	23 MAY 19
GEN 0.6-8	13 SEP 18	GEN 2.2-1	15 DEC 11
GEN 0.6-9	13 SEP 18	GEN 2.2-2	15 DEC 11
GEN 0.6-10	13 SEP 18	GEN 2.2-3	15 DEC 11
GEN 1-1	15 DEC 11	GEN 2.2-4	15 DEC 11
GEN 1-2	15 DEC 11	GEN 2.2-5	15 DEC 11
GEN 1.1-1	23 MAY 19	GEN 2.2-6	15 DEC 11
GEN 1.1-2	13 SEP 18	GEN 2.2-7	15 DEC 11
GEN 1.1-3	13 SEP 18	GEN 2.2-8	15 DEC 11
GEN 1.1-4	23 MAY 19	GEN 2.2-9	15 DEC 11
GEN 1.1-5	23 MAY 19	GEN 2.2-10	15 DEC 11
GEN 1.1-6	13 SEP 18		

Page No	Effective	Page No	Effective
GEN 2.2-11	15 DEC 11	GEN 3.1-3	8 NOV 18
GEN 2.2-12	15 DEC 11	GEN 3.1-4	8 NOV 18
GEN 2.2-13	2 APR 15	GEN 3.1-5	8 NOV 18
GEN 2.2-14	15 DEC 11	GEN 3.1-6	8 NOV 18
GEN 2.2-15	15 DEC 11	GEN 3.2-1	8 NOV 18
GEN 2.2-16	15 DEC 11	GEN 3.2-2	15 DEC 11
GEN 2.2-17	15 DEC 11	GEN 3.3-1	8 NOV 18
GEN 2.2-18	15 DEC 11	GEN 3.3-2	8 NOV 18
GEN 2.2-19	15 DEC 11	GEN 3.3-3	8 NOV 18
GEN 2.2-20	15 DEC 11	GEN 3.3-4	8 NOV 18
GEN 2.2-21	15 DEC 11	GEN 3.3-5	8 NOV 18
GEN 2.2-22	15 DEC 11	GEN 3.3-6	8 NOV 18
GEN 2.2-23	15 DEC 11	GEN 3.4-1	15 DEC 11
GEN 2.2-24	15 DEC 11	GEN 3.4-2	15 DEC 11
GEN 2.2-25	31 MAR 16	GEN 3.4-3	8 NOV 18
GEN 2.2-26	15 DEC 11	GEN 3.4-4	8 NOV 18
GEN 2.2-27	15 DEC 11	GEN 3.4-5	15 DEC 11
GEN 2.2-28	15 DEC 11	GEN 3.4-6	15 DEC 11
GEN 2.3-1	15 DEC 11	GEN 3.5-1	8 NOV 18
GEN 2.3-2	15 DEC 11	GEN 3.5-2	15 DEC 11
GEN 2.3-3	15 DEC 11	GEN 3.5-3	15 DEC 11
GEN 2.3-4	15 DEC 11	GEN 3.5-4	15 DEC 11
GEN 2.3-5	15 DEC 11	GEN 3.5-5	15 DEC 11
GEN 2.3-6	15 DEC 11	GEN 3.5-6	15 DEC 11
GEN 2.3-7	15 DEC 11	GEN 3.5-7	15 DEC 11
GEN 2.3-8	15 DEC 11	GEN 3.5-8	15 DEC 11
GEN 2.3-9	15 DEC 11	GEN 3.6-1	15 DEC 11
GEN 2.3-10	15 DEC 11	GEN 3.6-2	15 DEC 11
GEN 2.4-1	15 DEC 11	GEN 3.6-3	15 DEC 11
GEN 2.4-2	15 DEC 11	GEN 3.6-4	15 DEC 11
GEN 2.5-1	2 APR 15	GEN 3.6-5	15 DEC 11
GEN 2.5-2	2 APR 15	GEN 3.6-6	15 DEC 11
GEN 2.6-1	15 DEC 11	GEN 3.6-7	15 DEC 11
GEN 2.6-2	15 DEC 11	GEN 3.6-8	15 DEC 11
GEN 2.7-1	15 DEC 11	GEN 3.6-9	15 DEC 11
GEN 2.7-2	15 DEC 11	GEN 3.6-10	15 DEC 11
GEN 3-1	15 DEC 11	GEN 3.6-11	15 DEC 11
GEN 3-2	15 DEC 11	GEN 3.6-12	15 DEC 11
GEN 3.1-1	8 NOV 18	GEN 3.6-13	15 DEC 11
GEN 3.1-2	8 NOV 18	GEN 3.6-14	15 DEC 11

Page No	Effective	Page No	Effective
GEN 3.6-15	15 DEC 11	ENR 1.2-7	15 DEC 11
GEN 3.6-16	15 DEC 11	ENR 1.2-8	15 DEC 11
GEN 4-1	15 DEC 11	ENR 1.3-1	15 DEC 11
GEN 4-2	15 DEC 11	ENR 1.3-2	15 DEC 11
GEN 4.1-1	13 SEP 18	ENR 1.3-3	15 DEC 11
GEN 4.1-2	13 SEP 18	ENR 1.3-4	15 DEC 11
GEN 4.1-3	15 DEC 11	ENR 1.3-5	15 DEC 11
GEN 4.1-4	15 DEC 11	ENR 1.3-6	15 DEC 11
GEN 4.2-1	15 DEC 11	ENR 1.3-7	15 DEC 11
GEN 4.2-2	15 DEC 11	ENR 1.3-8	15 DEC 11
		ENR 1.4-1	15 DEC 11
		ENR 1.4-2	15 DEC 11
		ENR 1.4-3	15 DEC 11
		ENR 1.4-4	15 DEC 11
		ENR 1.5-1	15 DEC 11
		ENR 1.5-2	15 DEC 11
		ENR 1.5-3	15 DEC 11
		ENR 1.5-4	15 DEC 11
		ENR 1.5-5	15 DEC 11
		ENR 1.5-6	15 DEC 11
		ENR 1.5-7	15 DEC 11
		ENR 1.5-8	15 DEC 11
		ENR 1.5-9	15 DEC 11
		ENR 1.5-10	15 DEC 11
		ENR 1.5-11	15 DEC 11
		ENR 1.5-12	15 DEC 11
		ENR 1.5-13	15 DEC 11
		ENR 1.5-14	15 DEC 11
		ENR 1.5-15	15 DEC 11
		ENR 1.5-16	2 APR 15
		ENR 1.5-17	15 DEC 11
		ENR 1.5-18	15 DEC 11
		ENR 1.5-19	31 MAR 16
		ENR 1.5-20	15 SEP 16
		ENR 1.5-21	31 MAR 16
		ENR 1.5-22	31 MAR 16
		ENR 1.5-23	8 NOV 18
		ENR 1.5-24	31 MAR 16
		ENR 1.6-1	15 DEC 11
		ENR 1.6-2	15 DEC 11
<u>ENROUTE</u>			
ENR 0.6-1	15 DEC 11		
ENR 0.6-2	15 DEC 11		
ENR 0.6-3	15 DEC 11		
ENR 0.6-4	31 MAR 16		
ENR 0.6-5	31 MAR 16		
ENR 0.6-6	31 MAR 16		
ENR 0.6-7	31 MAR 16		
ENR 0.6-8	31 MAR 16		
ENR 0.6-9	31 MAR 16		
ENR 0.6-10	12 NOV 15		
ENR 1-1	15 DEC 11		
ENR 1-2	15 DEC 11		
ENR 1.1-1	15 DEC 11		
ENR 1.1-2	15 DEC 11		
ENR 1.1-3	15 DEC 11		
ENR 1.1-4	15 DEC 11		
ENR 1.1-5	15 DEC 11		
ENR 1.1-6	15 DEC 11		
ENR 1.1-7	15 DEC 11		
ENR 1.1-8	15 DEC 11		
ENR 1.1-9	15 DEC 11		
ENR 1.1-10	15 DEC 11		
ENR 1.2-1	15 DEC 11		
ENR 1.2-2	15 DEC 11		
ENR 1.2-3	15 DEC 11		
ENR 1.2-4	15 DEC 11		
ENR 1.2-5	15 DEC 11		
ENR 1.2-6	15 DEC 11		

Page No	Effective	Page No	Effective
ENR 1.7-1	2 APR 15	ENR 1.15-3	12 NOV 15
ENR 1.7-2	2 APR 15	ENR 1.15-4	12 NOV 15
ENR 1.7-3	2 APR 15	ENR 1.15-5	12 NOV 15
ENR 1.7-4	2 APR 15	ENR 1.15-6	12 NOV 15
ENR 1.7-5	2 APR 15	ENR 1.15-7	12 NOV 15
ENR 1.7-6	15 DEC 11	ENR 1.15-8	12 NOV 15
ENR 1.8-1	15 DEC 11	ENR 1.15-9	12 NOV 15
ENR 1.8-2	15 DEC 11	ENR 1.15-10	12 NOV 15
ENR 1.9-1	15 DEC 11	ENR 1.15-11	12 NOV 15
ENR 1.9-2	15 DEC 11	ENR 1.15-12	12 NOV 15
ENR 1.10-1	15 DEC 11	ENR 1.15-13	12 NOV 15
ENR 1.10-2	15 DEC 11	ENR 1.15-14	12 NOV 15
ENR 1.10-3	15 DEC 11	ENR 2-1	15 DEC 11
ENR 1.10-4	15 DEC 11	ENR 2-2	15 DEC 11
ENR 1.10-5	15 DEC 11	ENR 2.1-1	2 APR 15
ENR 1.10-6	15 DEC 11	ENR 2.1-2	2 APR 15
ENR 1.10-7	15 DEC 11	ENR 2.1-3	2 APR 15
ENR 1.10-8	15 DEC 11	ENR 2.1-4	2 APR 15
ENR 1.10-9	15 DEC 11	ENR 2.1-5	30 APR 15
ENR 1.10-10	15 DEC 11	ENR 2.1-6	2 APR 15
ENR 1.10-11	15 DEC 11	ENR 2.2-1	15 DEC 11
ENR 1.10-12	15 DEC 11	ENR 2.2-2	15 DEC 11
ENR 1.10-13	15 DEC 11	ENR 3-1	15 DEC 11
ENR 1.10-14	15 DEC 11	ENR 3-2	15 DEC 11
ENR 1.10-15	15 DEC 11	ENR 3.1-1	15 DEC 11
ENR 1.10-16	15 DEC 11	ENR 3.1-2	15 DEC 11
ENR 1.10-17	15 DEC 11	ENR 3.2-1	15 DEC 11
ENR 1.10-18	15 DEC 11	ENR 3.2-2	15 DEC 11
ENR 1.11-1	15 DEC 11	ENR 3.3-1	15 DEC 11
ENR 1.11-2	15 DEC 11	ENR 3.3-2	15 DEC 11
ENR 1.12-1	15 DEC 11	ENR 3.4-1	15 DEC 11
ENR 1.12-2	15 DEC 11	ENR 3.4-2	15 DEC 11
ENR 1.12-3	15 DEC 11	ENR 3.5-1	15 DEC 11
ENR 1.12-4	15 DEC 11	ENR 3.5-2	15 DEC 11
ENR 1.13-1	15 DEC 11	ENR 3.6-1	15 DEC 11
ENR 1.13-2	15 DEC 11	ENR 3.6-2	15 DEC 11
ENR 1.14-1	15 DEC 11	ENR 4-1	15 DEC 11
ENR 1.14-2	15 DEC 11	ENR 4-2	15 DEC 11
ENR 1.15-1	12 NOV 15	ENR 4.1-1	2 APR 15
ENR 1.15-2	12 NOV 15	ENR 4.1-2	15 DEC 11

Page No	Effective	Page No	Effective
ENR 4.2-1	15 DEC 11	AD 1.4-1	2 APR 15
ENR 4.2-2	15 DEC 11	AD 1.4-2	30 APR 15
ENR 4.3-1	15 DEC 11	AD 1.5-1	15 DEC 11
ENR 4.3-2	15 DEC 11	AD 1.5-2	15 DEC 11
ENR 4.4-1	15 DEC 11	AD 1.6-1	15 DEC 11
ENR 4.4-2	15 DEC 11	AD 1.6-2	15 DEC 11
ENR 5-1	15 DEC 11	AD 1.7-1	15 DEC 11
ENR 5-2	15 DEC 11	AD 1.7-2	15 DEC 11
ENR 5.1-1	15 DEC 11	AD 1.7-3	15 DEC 11
ENR 5.1-2	15 DEC 11	AD 1.7-4	15 DEC 11
ENR 5.2-1	15 DEC 11	AD 1.7-5	15 DEC 11
ENR 5.2-2	15 DEC 11	AD 1.7-6	15 DEC 11
ENR 5.3-1	2 APR 15	AD 1.8-1	15 DEC 11
ENR 5.3-2	15 DEC 11	AD 1.8-2	15 DEC 11
ENR 5.4-1	15 DEC 11	AD 1.9-1	15 DEC 11
ENR 5.4-2	15 DEC 11	AD 1.9-2	15 DEC 11
ENR 5.5-1	15 DEC 11	AD 1.9-3	15 DEC 11
ENR 5.5-2	15 DEC 11	AD 1.9-4	15 DEC 11
ENR 5.6-1	15 DEC 11		
ENR 5.6-2	15 DEC 11		
ENR 6-1	15 DEC 11		
ENR 6-2	15 DEC 11		
ENR 6.1-1	15 DEC 11		
ENR 6.1-2	15 DEC 11		
ENR 6.1-3	12 SEP 19		
ENR 6.1-4	12 SEP 19		
		<u>CHARTS</u>	
		NCAI AD 2-1	8 NOV 18
		NCAI AD 2-2	8 NOV 18
		NCAI AD 2-3	15 DEC 11
		NCAI AD 2-4	19 JUL 18
		NCAI AD 2-5	30 APR 15
		NCAI AD 2-6	8 NOV 18
		NCAI AD 2-7	15 DEC 11
		NCAI AD 2-8	15 DEC 11
		NCAI AD 2-9	15 DEC 11
		NCAI AD 2-10	30 APR 15
		NCAI AD 2-11	30 APR 15
		NCAI AD 2-12	25 MAY 17
		NCAI AD 2-13	25 MAY 17
		NCAI AD 2-14	25 MAY 17
		NCAI AD 2-44.1	25 MAY 17
		Blank	
		NCAI AD 2-45.1	25 MAY 17
		NCAI AD 2-45.2	13 SEP 18
		NCAI AD 2-51.1	13 SEP 18
		Blank	
<u>AERODROME</u>			
AD 0.6-1	15 DEC 11		
AD 0.6-2	15 DEC 11		
AD 0.6-3	15 DEC 11		
AD 0.6-4	15 DEC 11		
AD 1-1	15 DEC 11		
AD 1-2	15 DEC 11		
AD 1.1-1	15 DEC 11		
AD 1.1-2	2 APR 15		
AD 1.2-1	15 DEC 11		
AD 1.2-2	15 DEC 11		
AD 1.3-1	30 APR 15		
AD 1.3-2	15 DEC 11		

Page No	Effective	Page No	Effective
NCAT AD 2-1	25 MAY 17	NCMK AD 2-5	19 JUL 18
NCAT AD 2-2	30 APR 15	NCMK AD 2-6	30 APR 15
NCAT AD 2-3	25 MAY 17	NCMK AD 2-7	30 APR 15
NCAT AD 2-4	15 DEC 11	NCMK AD 2-8	25 MAY 17
NCAT AD 2-5	25 MAY 17	NCMK AD 2-45.1	25 MAY 17
NCAT AD 2-6	30 APR 15	Blank	
NCAT AD 2-7	30 APR 15	NCMK AD 2-51.1	19 JUL 18
NCAT AD 2-8	25 MAY 17	Blank	
NCAT AD 2-45.1	25 MAY 17	NCMR AD 2-1	25 MAY 17
Blank		NCMR AD 2-2	30 APR 15
NCAT AD 2-51.1	25 MAY 17	NCMR AD 2-3	30 APR 15
Blank		NCMR AD 2-4	15 DEC 11
NCMG AD 2-1	19 JUL 18	NCMR AD 2-5	25 MAY 17
NCMG AD 2-2	30 APR 15	NCMR AD 2-6	30 APR 15
NCMG AD 2-3	25 MAY 17	NCMR AD 2-7	30 APR 15
NCMG AD 2-4	15 DEC 11	NCMR AD 2-8	25 MAY 17
NCMG AD 2-5	19 JUL 18	NCMR AD 2-45.1	25 MAY 17
NCMG AD 2-6	30 APR 15	Blank	
NCMG AD 2-7	30 APR 15	NCMR AD 2-51.1	25 MAY 17
NCMG AD 2-8	25 MAY 17	Blank	
NCMG AD 2-45.1	25 MAY 17	NCPY AD 2-1	6 DEC 18
Blank		NCPY AD 2-2	30 APR 15
NCMG AD 2-51.1	25 MAY 17	NCPY AD 2-3	15 DEC 11
Blank		NCPY AD 2-4	15 DEC 11
NCMH AD 2-1	6 DEC 18	NCPY AD 2-5	6 DEC 18
NCMH AD 2-2	30 APR 15	NCPY AD 2-6	30 APR 15
NCMH AD 2-3	30 APR 15	NCPY AD 2-7	6 DEC 18
NCMH AD 2-4	15 DEC 11	NCPY AD 2-8	6 DEC 18
NCMH AD 2-5	6 DEC 18	NCPY AD 2-44.1	6 DEC 18
NCMH AD 2-6	30 APR 15	Blank	
NCMH AD 2-7	30 APR 15	NCPY AD 2-45.1	6 DEC 18
NCMH AD 2-8	6 DEC 18	Blank	6 DEC 18
NCMH AD 2-45.1	6 DEC 18	NCPY AD 2-51.1	6 DEC 18
NCMH AD 2-45.2	6 DEC 18	Blank	
NCMH AD 2-51.1	6 DEC 18	NCPK AD 2-1	6 DEC 18
Blank		NCPK AD 2-2	30 APR 15
NCMK AD 2-1	25 MAY 17	NCPK AD 2-3	15 DEC 11
NCMK AD 2-2	30 APR 15	NCPK AD 2-4	15 DEC 11
NCMK AD 2-3	25 MAY 17	NCPK AD 2-5	6 DEC 18
NCMK AD 2-4	15 DEC 11	NCPK AD 2-6	30 APR 15

Page No	Effective	Page No	Effective
NCPK AD 2-7	30 APR 15	NCRG AD 2-33.5	12 SEP 19
NCPK AD 2-8	6 DEC 18	Blank	
NCPK AD 2-45.1	6 DEC 18	NCRG AD 2-41.1	12 SEP 19
Blank		NCRG AD 2-41.2	7 NOV 19
NCPK AD 2-51.1	6 DEC 18	NCRG AD 2-43.1	8 NOV 18
Blank		NCRG AD 2-43.2	8 NOV 18
NCRG AD 2-1	8 NOV 18	NCRG AD 2-43.3	8 NOV 18
NCRG AD 2-2	8 NOV 18	Blank	
NCRG AD 2-3	8 NOV 18	NCRG AD 2-44.1	8 NOV 18
NCRG AD 2-4	8 NOV 18	Blank	
NCRG AD 2-5	8 NOV 18	NCRG AD 2-45.1	19 JUL 18
NCRG AD 2-6	15 DEC 11	NCRG AD 2-45.2	19 JUL 18
NCRG AD 2-7	19 JUL 18	NCRG AD 2-45.3	19 JUL 18
NCRG AD 2-8	13 SEP 18	NCRG AD 2-45.4	19 JUL 18
NCRG AD 2-9	2 APR 15	NCRG AD 2-45.5	19 JUL 18
NCRG AD 2-10	8 NOV 18	NCRG AD 2-45.6	19 JUL 18
NCRG AD 2-11	2 APR 15	NCRG AD 2-51.1	13 SEP 18
NCRG AD 2-12	19 JUL 18	NCRG AD 2-53.1	13 SEP 18
NCRG AD 2-13	2 APR 15	NCRG AD 2-62.1	12 SEP 19
NCRG AD 2-14	15 DEC 11	NCRG AD 2-62.2	12 SEP 19
NCRG AD 2-15	8 NOV 18	NCRG AD 2-62.3	12 SEP 19
NCRG AD 2-16	12 SEP 19	Blank	
NCRG AD 2-33.1	12 SEP 19	NCRG AD 2-62.4	12 SEP 19
NCRG AD 2-33.2	12 SEP 19	NCRG AD 2-62.5	12 SEP 19
NCRG AD 2-33.3	12 SEP 19		
NCRG AD 2-33.4	12 SEP 19		

Intentionally Blank

ELEV 19

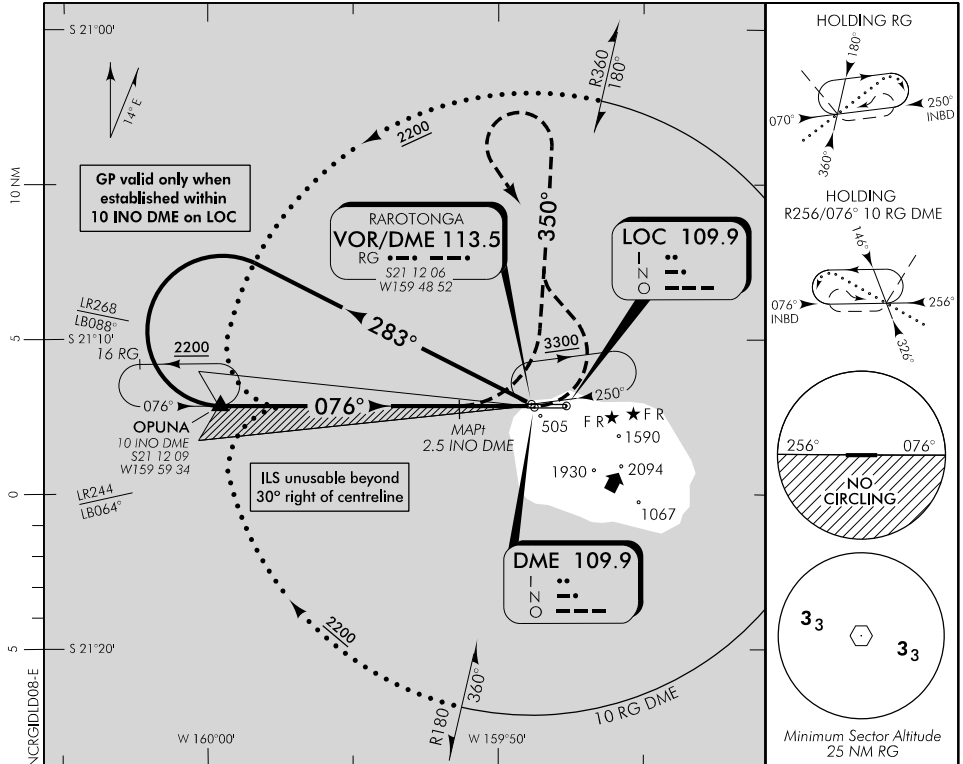
CAT A,B,C,D

RAROTONGA

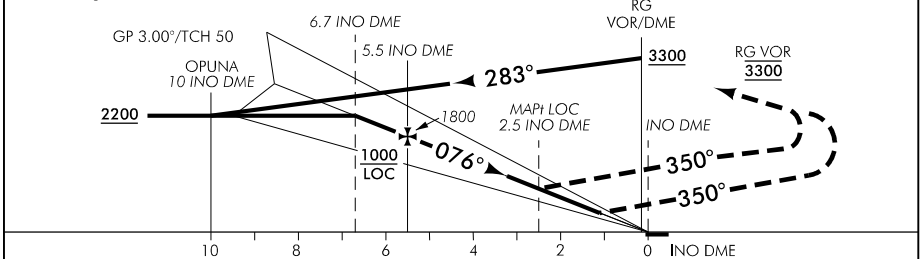
RWY 08 THR ELEV 19

ILS/DME or LOC/DME RWY 08

APPROACH AND AERODROME CONTROL RAROTONGA TOWER: 118.1 121.9



Use Rarotonga QNH



MISSED APCH: MAX IAS 185 kt. Turn LEFT, intercept R350 RG VOR, return to RG holding 3300, or as instructed by ATC.

INO DME DIST	10	9	8	7	6	5	4	3	2.7	1.1
Advisory Altitude 3°	3290	2960	2620	2290	1960	1630	1310	980	MDA	DA
Category	A			B			C		D	
ILS/DME	380(361) – 2000						400(381) – 2000			
LOC/DME	820(801) – 5						960(941) – 5			
Circling Restricted *	860(841) – 5						960(941) – 5			

* Circling NA South of RWY 08/26

Effective: 12 SEP 19

© Government of Cook Islands

RAROTONGA
ILS/DME or LOC/DME RWY 08

Changes from 8 NOV 18: WPT OPUNA added.

ELEV 19

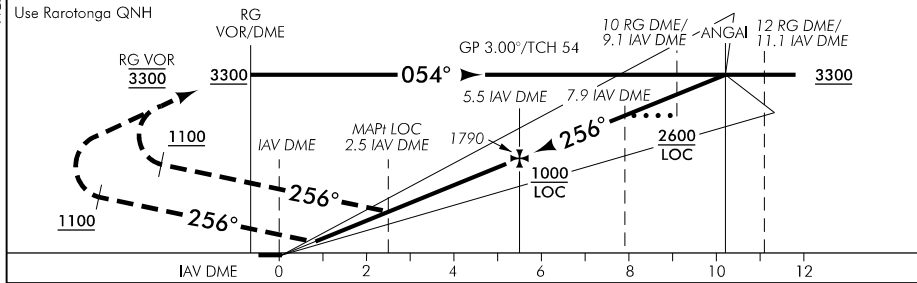
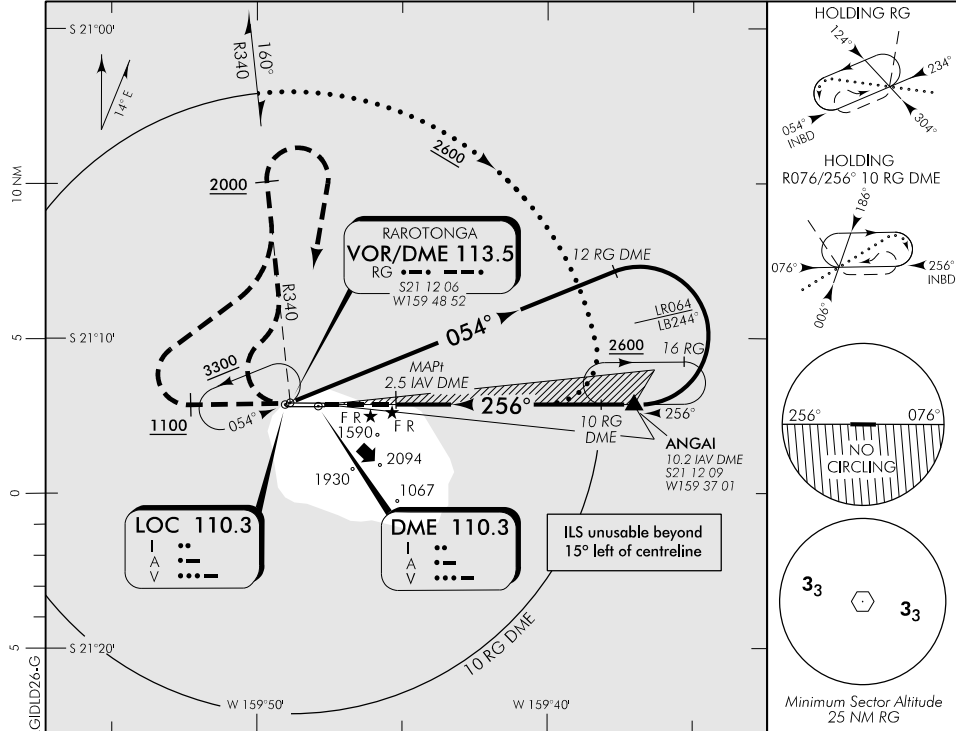
CAT A,B,C,D

RAROTONGA

RWY 26 THR ELEV 14

ILS/DME or LOC/DME RWY 26

APPROACH AND AERODROME CONTROL RAROTONGA TOWER: 118.1 121.9



MISSED APCH: MAX IAS 185 kt. Track 256° to **1100**, turn **RIGHT** intercept R340 RG VOR to **2000**, turn **RIGHT** direct to RG VOR **3300**, or as instructed by ATC.

IAV DME DIST	0.8	2.6	3	4	5	6	7	8	9	10	11	12
Advisory Altitude 3°	DA	MDA	980	1300	1630	1960	2290	2620	2950	3290	3630	3960
Category	A		B			C			D			
ILS/DME	700(686) - 3700						730(716) - 3900					
ILS/DME *	280(266) - 1800											
LOC/DME	980(961) - 5											
LOC/DME *	830(811) - 4800											
Circling Restricted #	980(961) - 5											
* Missed approach minimum climb gradient 4.0% (250 ft/NM)						# Circling NA South of RWY 08/26						

Changes from 12 SEP 19: Chart republished (nil changes - Version 2 label removed).

Effective: 7 NOV 19