

**Amendment NR 13**

---

**SIGNIFICANT CHANGES**

Nil

**GEN Section: Significant Changes**

Nil

**ENR Section: Significant Changes**

ENR 6.1 — Domestic Enroute Charts — RG Navaid coordinates updated

Minimum Sector Altitude 25 NM RG VOR text

**AD Section: Significant Changes**

Nil

**AD 2 Section: Significant Changes**

---

**Rarotonga — NCRG**

- STAR RWY 08
    - 10 RG DME ARC MSA raised
    - All arrivals minimum descent altitude text
  - STAR RWY 26 — All arrivals minimum descent altitude text
  - ILS/DME OR LOC/DME RWY 26 - DME depiction on profile updated
-

***INTENTIONALLY  
BLANK***

## Filing Instructions

AIRAC

AIP COOK ISLANDS

31 JAN 19

## Amendment NR 13

REMOVE		INSERT	
<b>GEN</b>		<b>GEN</b>	
GEN 0.4-1	6 DEC 18	GEN 0.4-1	31 JAN 19
GEN 0.4-2	6 DEC 18	GEN 0.4-2	31 JAN 19
GEN 0.4-3	6 DEC 18	GEN 0.4-3	31 JAN 19
GEN 0.4-4	6 DEC 18	GEN 0.4-4	31 JAN 19
GEN 0.4-5	6 DEC 18	GEN 0.4-5	31 JAN 19
GEN 0.4-6	6 DEC 18	GEN 0.4-6	31 JAN 19
GEN 0.4-7	6 DEC 18	GEN 0.4-7	31 JAN 19
GEN 0.4-8	6 DEC 18	GEN 0.4-8	31 JAN 19
<b>ENR</b>		<b>ENR</b>	
ENR 6.1-3	15 DEC 11	ENR 6.1-3	31 JAN 19
ENR 6.1-4	15 DEC 11	ENR 6.1-4	31 JAN 19
<b>AD 2</b>		<b>AD 2</b>	
<b>RAROTONGA (NCRG)</b>		<b>RAROTONGA (NCRG)</b>	
NCRG AD 2-33.1	13 SEP 18	NCRG AD 2-33.1	31 JAN 19
NCRG AD 2-33.2	13 SEP 18	NCRG AD 2-33.2	31 JAN 19
NCRG AD 2-41.1	8 NOV 18	NCRG AD 2-41.1	8 NOV 18
NCRG AD 2-41.2	8 NOV 18	NCRG AD 2-41.2	31 JAN 19

When filing is complete, update GEN 0.2 — Record of AIP Amendments

*INTENTIONALLY  
BLANK*

**GEN 0.4 CHECKLIST OF AIP PAGES**

<b>Page No</b>	<b>Effective</b>	<b>Page No</b>	<b>Effective</b>
<b>GENERAL</b>		GEN 1.2-1	13 SEP 18
GEN 0.1-1	13 SEP 18	GEN 1.2-2	13 SEP 18
GEN 0.1-2	13 SEP 18	GEN 1.2-3	13 SEP 18
GEN 0.1-3	13 SEP 18	GEN 1.2-4	13 SEP 18
GEN 0.1-4	15 DEC 11	GEN 1.2-5	13 SEP 18
GEN 0.1-5	15 DEC 11	GEN 1.2-6	13 SEP 18
GEN 0.1-6	15 DEC 11	GEN 1.2-7	13 SEP 18
GEN 0.2-1	15 DEC 11	GEN 1.2-8	13 SEP 18
GEN 0.2-2	15 DEC 11	GEN 1.3-1	13 SEP 18
GEN 0.3-1	15 DEC 11	GEN 1.3-2	13 SEP 18
GEN 0.3-2	15 DEC 11	GEN 1.3-3	13 SEP 18
GEN 0.4-1	31 JAN 19	GEN 1.3-4	13 SEP 18
GEN 0.4-2	31 JAN 19	GEN 1.4-1	15 DEC 11
GEN 0.4-3	31 JAN 19	GEN 1.4-2	15 DEC 11
GEN 0.4-4	31 JAN 19	GEN 1.5-1	15 DEC 11
GEN 0.4-5	31 JAN 19	GEN 1.5-2	15 DEC 11
GEN 0.4-6	31 JAN 19	GEN 1.6-1	13 SEP 18
GEN 0.4-7	31 JAN 19	GEN 1.6-2	15 DEC 11
GEN 0.4-8	31 JAN 19	GEN 1.7-1	15 DEC 11
GEN 0.6-1	13 SEP 18	GEN 1.7-2	15 DEC 11
GEN 0.6-2	13 SEP 18	GEN 2-1	15 DEC 11
GEN 0.6-3	13 SEP 18	GEN 2-2	15 DEC 11
GEN 0.6-4	13 SEP 18	GEN 2.1-1	15 DEC 11
GEN 0.6-5	13 SEP 18	GEN 2.1-2	15 DEC 11
GEN 0.6-6	8 NOV 18	GEN 2.1-3	13 SEP 18
GEN 0.6-7	8 NOV 18	GEN 2.1-4	2 APR 15
GEN 0.6-8	13 SEP 18	GEN 2.2-1	15 DEC 11
GEN 0.6-9	13 SEP 18	GEN 2.2-2	15 DEC 11
GEN 0.6-10	13 SEP 18	GEN 2.2-3	15 DEC 11
GEN 1-1	15 DEC 11	GEN 2.2-4	15 DEC 11
GEN 1-2	15 DEC 11	GEN 2.2-5	15 DEC 11
GEN 1.1-1	13 SEP 18	GEN 2.2-6	15 DEC 11
GEN 1.1-2	13 SEP 18	GEN 2.2-7	15 DEC 11
GEN 1.1-3	13 SEP 18	GEN 2.2-8	15 DEC 11
GEN 1.1-4	13 SEP 18	GEN 2.2-9	15 DEC 11
GEN 1.1-5	13 SEP 18	GEN 2.2-10	15 DEC 11
GEN 1.1-6	13 SEP 18		

<b>Page No</b>	<b>Effective</b>	<b>Page No</b>	<b>Effective</b>
GEN 2.2-11	15 DEC 11	GEN 3.1-3	8 NOV 18
GEN 2.2-12	15 DEC 11	GEN 3.1-4	8 NOV 18
GEN 2.2-13	2 APR 15	GEN 3.1-5	8 NOV 18
GEN 2.2-14	15 DEC 11	GEN 3.1-6	8 NOV 18
GEN 2.2-15	15 DEC 11	GEN 3.2-1	8 NOV 18
GEN 2.2-16	15 DEC 11	GEN 3.2-2	15 DEC 11
GEN 2.2-17	15 DEC 11	GEN 3.3-1	8 NOV 18
GEN 2.2-18	15 DEC 11	GEN 3.3-2	8 NOV 18
GEN 2.2-19	15 DEC 11	GEN 3.3-3	8 NOV 18
GEN 2.2-20	15 DEC 11	GEN 3.3-4	8 NOV 18
GEN 2.2-21	15 DEC 11	GEN 3.3-5	8 NOV 18
GEN 2.2-22	15 DEC 11	GEN 3.3-6	8 NOV 18
GEN 2.2-23	15 DEC 11	GEN 3.4-1	15 DEC 11
GEN 2.2-24	15 DEC 11	GEN 3.4-2	15 DEC 11
GEN 2.2-25	31 MAR 16	GEN 3.4-3	8 NOV 18
GEN 2.2-26	15 DEC 11	GEN 3.4-4	8 NOV 18
GEN 2.2-27	15 DEC 11	GEN 3.4-5	15 DEC 11
GEN 2.2-28	15 DEC 11	GEN 3.4-6	15 DEC 11
GEN 2.3-1	15 DEC 11	GEN 3.5-1	8 NOV 18
GEN 2.3-2	15 DEC 11	GEN 3.5-2	15 DEC 11
GEN 2.3-3	15 DEC 11	GEN 3.5-3	15 DEC 11
GEN 2.3-4	15 DEC 11	GEN 3.5-4	15 DEC 11
GEN 2.3-5	15 DEC 11	GEN 3.5-5	15 DEC 11
GEN 2.3-6	15 DEC 11	GEN 3.5-6	15 DEC 11
GEN 2.3-7	15 DEC 11	GEN 3.5-7	15 DEC 11
GEN 2.3-8	15 DEC 11	GEN 3.5-8	15 DEC 11
GEN 2.3-9	15 DEC 11	GEN 3.6-1	15 DEC 11
GEN 2.3-10	15 DEC 11	GEN 3.6-2	15 DEC 11
GEN 2.4-1	15 DEC 11	GEN 3.6-3	15 DEC 11
GEN 2.4-2	15 DEC 11	GEN 3.6-4	15 DEC 11
GEN 2.5-1	2 APR 15	GEN 3.6-5	15 DEC 11
GEN 2.5-2	2 APR 15	GEN 3.6-6	15 DEC 11
GEN 2.6-1	15 DEC 11	GEN 3.6-7	15 DEC 11
GEN 2.6-2	15 DEC 11	GEN 3.6-8	15 DEC 11
GEN 2.7-1	15 DEC 11	GEN 3.6-9	15 DEC 11
GEN 2.7-2	15 DEC 11	GEN 3.6-10	15 DEC 11
GEN 3-1	15 DEC 11	GEN 3.6-11	15 DEC 11
GEN 3-2	15 DEC 11	GEN 3.6-12	15 DEC 11
GEN 3.1-1	8 NOV 18	GEN 3.6-13	15 DEC 11
GEN 3.1-2	8 NOV 18	GEN 3.6-14	15 DEC 11

<b>Page No</b>	<b>Effective</b>	<b>Page No</b>	<b>Effective</b>
GEN 3.6-15	15 DEC 11	ENR 1.2-7	15 DEC 11
GEN 3.6-16	15 DEC 11	ENR 1.2-8	15 DEC 11
GEN 4-1	15 DEC 11	ENR 1.3-1	15 DEC 11
GEN 4-2	15 DEC 11	ENR 1.3-2	15 DEC 11
GEN 4.1-1	13 SEP 18	ENR 1.3-3	15 DEC 11
GEN 4.1-2	13 SEP 18	ENR 1.3-4	15 DEC 11
GEN 4.1-3	15 DEC 11	ENR 1.3-5	15 DEC 11
GEN 4.1-4	15 DEC 11	ENR 1.3-6	15 DEC 11
GEN 4.2-1	15 DEC 11	ENR 1.3-7	15 DEC 11
GEN 4.2-2	15 DEC 11	ENR 1.3-8	15 DEC 11
		ENR 1.4-1	15 DEC 11
		ENR 1.4-2	15 DEC 11
		ENR 1.4-3	15 DEC 11
		ENR 1.4-4	15 DEC 11
		ENR 1.5-1	15 DEC 11
		ENR 1.5-2	15 DEC 11
		ENR 1.5-3	15 DEC 11
		ENR 1.5-4	15 DEC 11
		ENR 1.5-5	15 DEC 11
		ENR 1.5-6	15 DEC 11
		ENR 1.5-7	15 DEC 11
		ENR 1.5-8	15 DEC 11
		ENR 1.5-9	15 DEC 11
		ENR 1.5-10	15 DEC 11
		ENR 1.5-11	15 DEC 11
		ENR 1.5-12	15 DEC 11
		ENR 1.5-13	15 DEC 11
		ENR 1.5-14	15 DEC 11
		ENR 1.5-15	15 DEC 11
		ENR 1.5-16	2 APR 15
		ENR 1.5-17	15 DEC 11
		ENR 1.5-18	15 DEC 11
		ENR 1.5-19	31 MAR 16
		ENR 1.5-20	15 SEP 16
		ENR 1.5-21	31 MAR 16
		ENR 1.5-22	31 MAR 16
		ENR 1.5-23	8 NOV 18
		ENR 1.5-24	31 MAR 16
		ENR 1.6-1	15 DEC 11
		ENR 1.6-2	15 DEC 11
<b>ENROUTE</b>			
ENR 0.6-1	15 DEC 11		
ENR 0.6-2	15 DEC 11		
ENR 0.6-3	15 DEC 11		
ENR 0.6-4	31 MAR 16		
ENR 0.6-5	31 MAR 16		
ENR 0.6-6	31 MAR 16		
ENR 0.6-7	31 MAR 16		
ENR 0.6-8	31 MAR 16		
ENR 0.6-9	31 MAR 16		
ENR 0.6-10	12 NOV 15		
ENR 1-1	15 DEC 11		
ENR 1-2	15 DEC 11		
ENR 1.1-1	15 DEC 11		
ENR 1.1-2	15 DEC 11		
ENR 1.1-3	15 DEC 11		
ENR 1.1-4	15 DEC 11		
ENR 1.1-5	15 DEC 11		
ENR 1.1-6	15 DEC 11		
ENR 1.1-7	15 DEC 11		
ENR 1.1-8	15 DEC 11		
ENR 1.1-9	15 DEC 11		
ENR 1.1-10	15 DEC 11		
ENR 1.2-1	15 DEC 11		
ENR 1.2-2	15 DEC 11		
ENR 1.2-3	15 DEC 11		
ENR 1.2-4	15 DEC 11		
ENR 1.2-5	15 DEC 11		
ENR 1.2-6	15 DEC 11		

<b>Page No</b>	<b>Effective</b>	<b>Page No</b>	<b>Effective</b>
ENR 1.7-1	2 APR 15	ENR 1.15-3	12 NOV 15
ENR 1.7-2	2 APR 15	ENR 1.15-4	12 NOV 15
ENR 1.7-3	2 APR 15	ENR 1.15-5	12 NOV 15
ENR 1.7-4	2 APR 15	ENR 1.15-6	12 NOV 15
ENR 1.7-5	2 APR 15	ENR 1.15-7	12 NOV 15
ENR 1.7-6	15 DEC 11	ENR 1.15-8	12 NOV 15
ENR 1.8-1	15 DEC 11	ENR 1.15-9	12 NOV 15
ENR 1.8-2	15 DEC 11	ENR 1.15-10	12 NOV 15
ENR 1.9-1	15 DEC 11	ENR 1.15-11	12 NOV 15
ENR 1.9-2	15 DEC 11	ENR 1.15-12	12 NOV 15
ENR 1.10-1	15 DEC 11	ENR 1.15-13	12 NOV 15
ENR 1.10-2	15 DEC 11	ENR 1.15-14	12 NOV 15
ENR 1.10-3	15 DEC 11	ENR 2-1	15 DEC 11
ENR 1.10-4	15 DEC 11	ENR 2-2	15 DEC 11
ENR 1.10-5	15 DEC 11	ENR 2.1-1	2 APR 15
ENR 1.10-6	15 DEC 11	ENR 2.1-2	2 APR 15
ENR 1.10-7	15 DEC 11	ENR 2.1-3	2 APR 15
ENR 1.10-8	15 DEC 11	ENR 2.1-4	2 APR 15
ENR 1.10-9	15 DEC 11	ENR 2.1-5	30 APR 15
ENR 1.10-10	15 DEC 11	ENR 2.1-6	2 APR 15
ENR 1.10-11	15 DEC 11	ENR 2.2-1	15 DEC 11
ENR 1.10-12	15 DEC 11	ENR 2.2-2	15 DEC 11
ENR 1.10-13	15 DEC 11	ENR 3-1	15 DEC 11
ENR 1.10-14	15 DEC 11	ENR 3-2	15 DEC 11
ENR 1.10-15	15 DEC 11	ENR 3.1-1	15 DEC 11
ENR 1.10-16	15 DEC 11	ENR 3.1-2	15 DEC 11
ENR 1.10-17	15 DEC 11	ENR 3.2-1	15 DEC 11
ENR 1.10-18	15 DEC 11	ENR 3.2-2	15 DEC 11
ENR 1.11-1	15 DEC 11	ENR 3.3-1	15 DEC 11
ENR 1.11-2	15 DEC 11	ENR 3.3-2	15 DEC 11
ENR 1.12-1	15 DEC 11	ENR 3.4-1	15 DEC 11
ENR 1.12-2	15 DEC 11	ENR 3.4-2	15 DEC 11
ENR 1.12-3	15 DEC 11	ENR 3.5-1	15 DEC 11
ENR 1.12-4	15 DEC 11	ENR 3.5-2	15 DEC 11
ENR 1.13-1	15 DEC 11	ENR 3.6-1	15 DEC 11
ENR 1.13-2	15 DEC 11	ENR 3.6-2	15 DEC 11
ENR 1.14-1	15 DEC 11	ENR 4-1	15 DEC 11
ENR 1.14-2	15 DEC 11	ENR 4-2	15 DEC 11
ENR 1.15-1	12 NOV 15	ENR 4.1-1	2 APR 15
ENR 1.15-2	12 NOV 15	ENR 4.1-2	15 DEC 11



<b>Page No</b>	<b>Effective</b>	<b>Page No</b>	<b>Effective</b>
ENR 4.2-1	15 DEC 11	AD 1.4-1	2 APR 15
ENR 4.2-2	15 DEC 11	AD 1.4-2	30 APR 15
ENR 4.3-1	15 DEC 11	AD 1.5-1	15 DEC 11
ENR 4.3-2	15 DEC 11	AD 1.5-2	15 DEC 11
ENR 4.4-1	15 DEC 11	AD 1.6-1	15 DEC 11
ENR 4.4-2	15 DEC 11	AD 1.6-2	15 DEC 11
ENR 5-1	15 DEC 11	AD 1.7-1	15 DEC 11
ENR 5-2	15 DEC 11	AD 1.7-2	15 DEC 11
ENR 5.1-1	15 DEC 11	AD 1.7-3	15 DEC 11
ENR 5.1-2	15 DEC 11	AD 1.7-4	15 DEC 11
ENR 5.2-1	15 DEC 11	AD 1.7-5	15 DEC 11
ENR 5.2-2	15 DEC 11	AD 1.7-6	15 DEC 11
ENR 5.3-1	2 APR 15	AD 1.8-1	15 DEC 11
ENR 5.3-2	15 DEC 11	AD 1.8-2	15 DEC 11
ENR 5.4-1	15 DEC 11	AD 1.9-1	15 DEC 11
ENR 5.4-2	15 DEC 11	AD 1.9-2	15 DEC 11
ENR 5.5-1	15 DEC 11	AD 1.9-3	15 DEC 11
ENR 5.5-2	15 DEC 11	AD 1.9-4	15 DEC 11
ENR 5.6-1	15 DEC 11		
ENR 5.6-2	15 DEC 11		
ENR 6-1	15 DEC 11	<b>CHARTS</b>	
ENR 6-2	15 DEC 11	NCAI AD 2-1	8 NOV 18
ENR 6.1-1	15 DEC 11	NCAI AD 2-2	8 NOV 18
ENR 6.1-2	15 DEC 11	NCAI AD 2-3	15 DEC 11
ENR 6.1-2	15 DEC 11	NCAI AD 2-4	19 JUL 18
ENR 6.1-3	31 JAN 19	NCAI AD 2-5	30 APR 15
ENR 6.1-4	31 JAN 19	NCAI AD 2-6	8 NOV 18
		NCAI AD 2-7	15 DEC 11
		NCAI AD 2-8	15 DEC 11
		NCAI AD 2-9	15 DEC 11
		NCAI AD 2-10	30 APR 15
		NCAI AD 2-11	30 APR 15
		NCAI AD 2-12	25 MAY 17
		NCAI AD 2-13	25 MAY 17
		NCAI AD 2-14	25 MAY 17
		NCAI AD 2-44.1	25 MAY 17
		Blank	
		NCAI AD 2-45.1	25 MAY 17
		NCAI AD 2-45.2	13 SEP 18
		NCAI AD 2-51.1	13 SEP 18
		Blank	
<b><u>AERODROME</u></b>			
AD 0.6-1	15 DEC 11		
AD 0.6-2	15 DEC 11		
AD 0.6-3	15 DEC 11		
AD 0.6-4	15 DEC 11		
AD 1-1	15 DEC 11		
AD 1-2	15 DEC 11		
AD 1.1-1	15 DEC 11		
AD 1.1-2	2 APR 15		
AD 1.2-1	15 DEC 11		
AD 1.2-2	15 DEC 11		
AD 1.3-1	30 APR 15		
AD 1.3-2	15 DEC 11		

<b>Page No</b>	<b>Effective</b>	<b>Page No</b>	<b>Effective</b>
NCAT AD 2-1	25 MAY 17	NCMK AD 2-5	19 JUL 18
NCAT AD 2-2	30 APR 15	NCMK AD 2-6	30 APR 15
NCAT AD 2-3	25 MAY 17	NCMK AD 2-7	30 APR 15
NCAT AD 2-4	15 DEC 11	NCMK AD 2-8	25 MAY 17
NCAT AD 2-5	25 MAY 17	NCMK AD 2-45.1	25 MAY 17
NCAT AD 2-6	30 APR 15	Blank	
NCAT AD 2-7	30 APR 15	NCMK AD 2-51.1	19 JUL 18
NCAT AD 2-8	25 MAY 17	Blank	
NCAT AD 2-45.1	25 MAY 17	NCMR AD 2-1	25 MAY 17
Blank		NCMR AD 2-2	30 APR 15
NCAT AD 2-51.1	25 MAY 17	NCMR AD 2-3	30 APR 15
Blank		NCMR AD 2-4	15 DEC 11
NCMG AD 2-1	19 JUL 18	NCMR AD 2-5	25 MAY 17
NCMG AD 2-2	30 APR 15	NCMR AD 2-6	30 APR 15
NCMG AD 2-3	25 MAY 17	NCMR AD 2-7	30 APR 15
NCMG AD 2-4	15 DEC 11	NCMR AD 2-8	25 MAY 17
NCMG AD 2-5	19 JUL 18	NCMR AD 2-45.1	25 MAY 17
NCMG AD 2-6	30 APR 15	Blank	
NCMG AD 2-7	30 APR 15	NCMR AD 2-51.1	25 MAY 17
NCMG AD 2-8	25 MAY 17	Blank	
NCMG AD 2-45.1	25 MAY 17	NCPY AD 2-1	6 DEC 18
Blank		NCPY AD 2-2	30 APR 15
NCMG AD 2-51.1	25 MAY 17	NCPY AD 2-3	15 DEC 11
Blank		NCPY AD 2-4	15 DEC 11
NCMH AD 2-1	6 DEC 18	NCPY AD 2-5	6 DEC 18
NCMH AD 2-2	30 APR 15	NCPY AD 2-6	30 APR 15
NCMH AD 2-3	30 APR 15	NCPY AD 2-7	6 DEC 18
NCMH AD 2-4	15 DEC 11	NCPY AD 2-8	6 DEC 18
NCMH AD 2-5	6 DEC 18	NCPY AD 2-44.1	6 DEC 18
NCMH AD 2-6	30 APR 15	Blank	
NCMH AD 2-7	30 APR 15	NCPY AD 2-45.1	6 DEC 18
NCMH AD 2-8	6 DEC 18	Blank	6 DEC 18
NCMH AD 2-45.1	6 DEC 18	NCPY AD 2-51.1	6 DEC 18
NCMH AD 2-45.2	6 DEC 18	Blank	
NCMH AD 2-51.1	6 DEC 18	NCPK AD 2-1	6 DEC 18
Blank		NCPK AD 2-2	30 APR 15
NCMK AD 2-1	25 MAY 17	NCPK AD 2-3	15 DEC 11
NCMK AD 2-2	30 APR 15	NCPK AD 2-4	15 DEC 11
NCMK AD 2-3	25 MAY 17	NCPK AD 2-5	6 DEC 18
NCMK AD 2-4	15 DEC 11	NCPK AD 2-6	30 APR 15

<b>Page No</b>	<b>Effective</b>	<b>Page No</b>	<b>Effective</b>
NCPK AD 2-7	30 APR 15	NCRG AD 2-33.1	31 JAN 19
NCPK AD 2-8	6 DEC 18	NCRG AD 2-33.2	31 JAN 19
NCPK AD 2-45.1	6 DEC 18	NCRG AD 2-41.1	8 NOV 18
Blank		NCRG AD 2-41.2	31 JAN 19
NCPK AD 2-51.1	6 DEC 18	NCRG AD 2-43.1	8 NOV 18
Blank		NCRG AD 2-43.2	8 NOV 18
NCRG AD 2-1	8 NOV 18	NCRG AD 2-43.3	8 NOV 18
NCRG AD 2-2	8 NOV 18	Blank	
NCRG AD 2-3	8 NOV 18	NCRG AD 2-44.1	8 NOV 18
NCRG AD 2-4	8 NOV 18	Blank	
NCRG AD 2-5	8 NOV 18	NCRG AD 2-45.1	19 JUL 18
NCRG AD 2-6	15 DEC 11	NCRG AD 2-45.2	19 JUL 18
NCRG AD 2-7	19 JUL 18	NCRG AD 2-45.3	19 JUL 18
NCRG AD 2-8	13 SEP 18	NCRG AD 2-45.4	19 JUL 18
NCRG AD 2-9	2 APR 15	NCRG AD 2-45.5	19 JUL 18
NCRG AD 2-10	8 NOV 18	NCRG AD 2-45.6	19 JUL 18
NCRG AD 2-11	2 APR 15	NCRG AD 2-51.1	13 SEP 18
NCRG AD 2-12	19 JUL 18	NCRG AD 2-53.1	13 SEP 18
NCRG AD 2-13	2 APR 15	NCRG AD 2-62.1	13 SEP 18
NCRG AD 2-14	15 DEC 11	Blank	
NCRG AD 2-15	8 NOV 18		
NCRG AD 2-16	13 SEP 18		

# **Intentionally Blank**





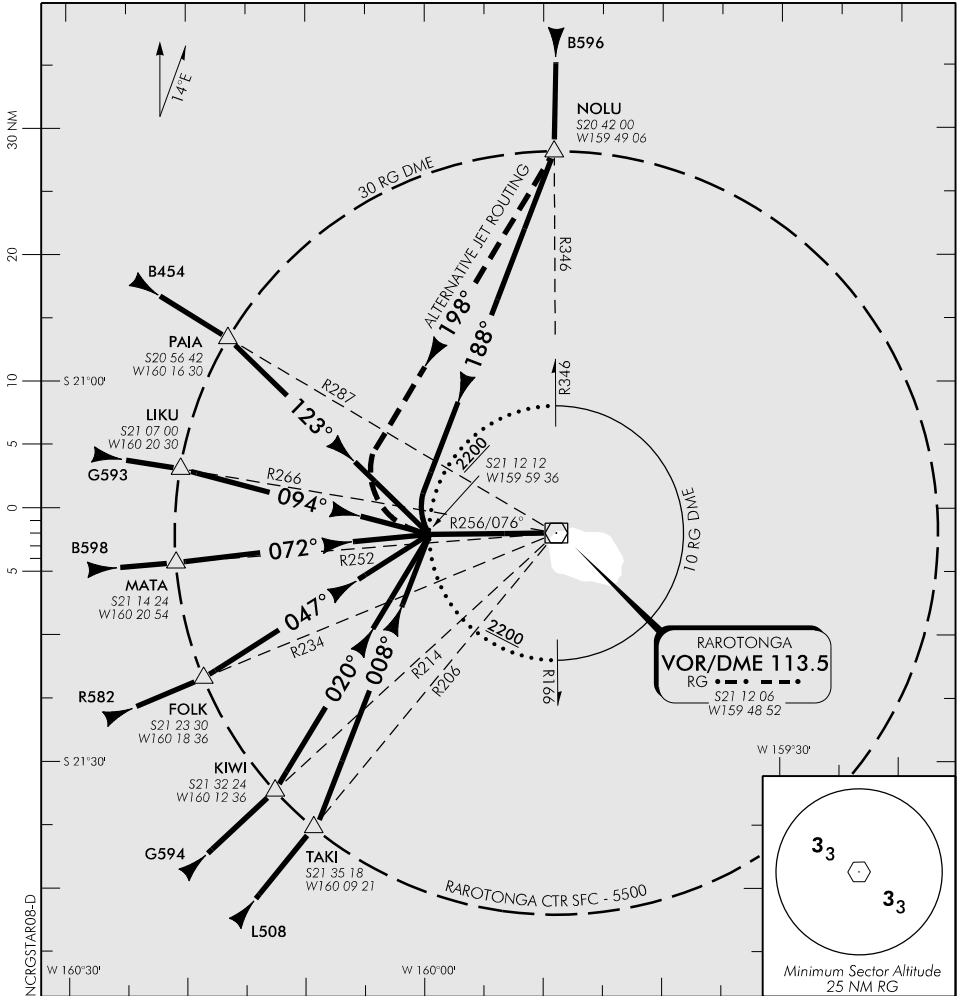
ELEV 19

# RAROTONGA

NCRG

## STAR RWY 08

APPROACH AND AERODROME CONTROL RAROTONGA TOWER: 118.1 121.9



### ALL ARRIVALS

- Descend to MNM 2200 ft to join final approach ILS, LOC/DME, or VOR/DME RWY 08 at not less than 10 NM DME.
- Clearance for a STAR does not constitute clearance for instrument approach.

**Effective: 31 JAN 19**

Changes from 13 SEP 18: 10 RG DME ARC MSA raised.

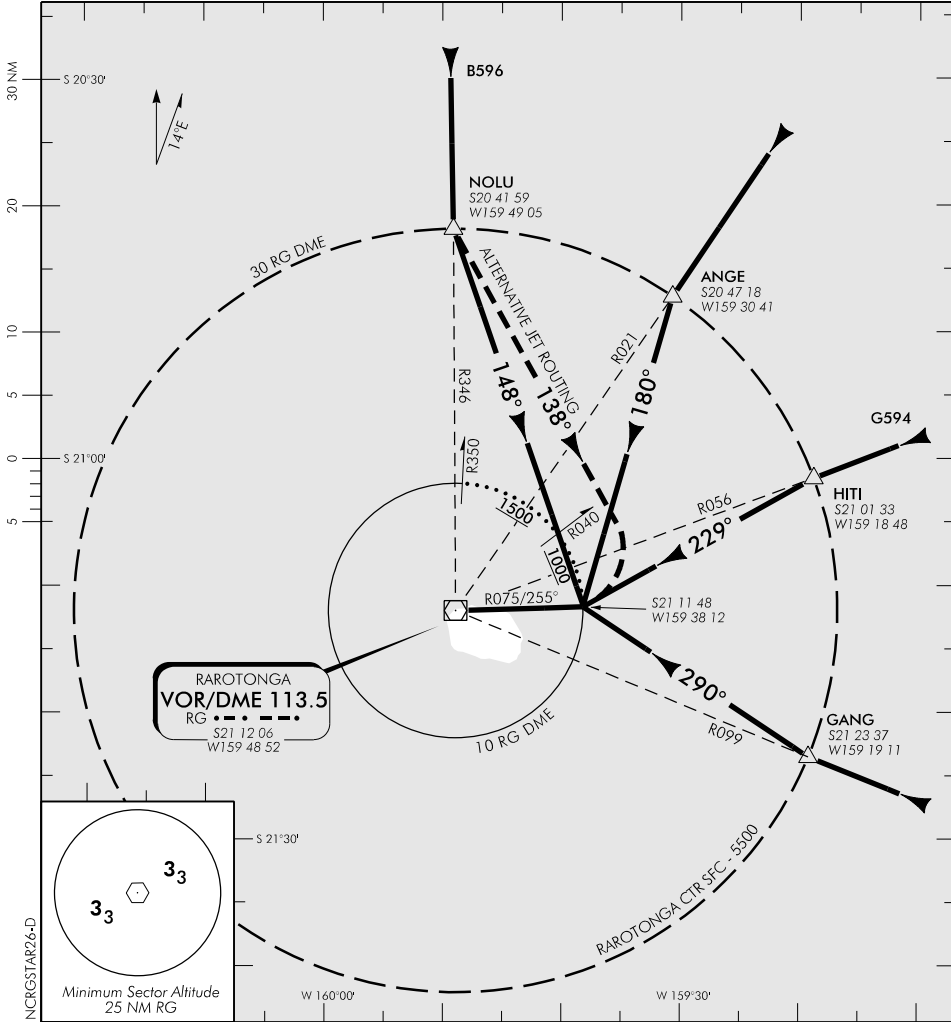
# RAROTONGA

## STAR RWY 26

ELEV 19

NCRG

APPROACH AND AERODROME CONTROL RAROTONGA TOWER: 118.1 121.9



Changes from 13 SEP 18: All arrivals minimum descent altitude text.

### ALL ARRIVALS

- Descend to MNM 2600 ft to join final approach ILS, LOC/DME RWY 26 or MNM 1000 ft to join final approach VOR/DME A at not less than 10 NM DME.
- Clearance for a STAR does not constitute clearance for instrument approach.

**Effective: 31 JAN 19**



ELEV 19

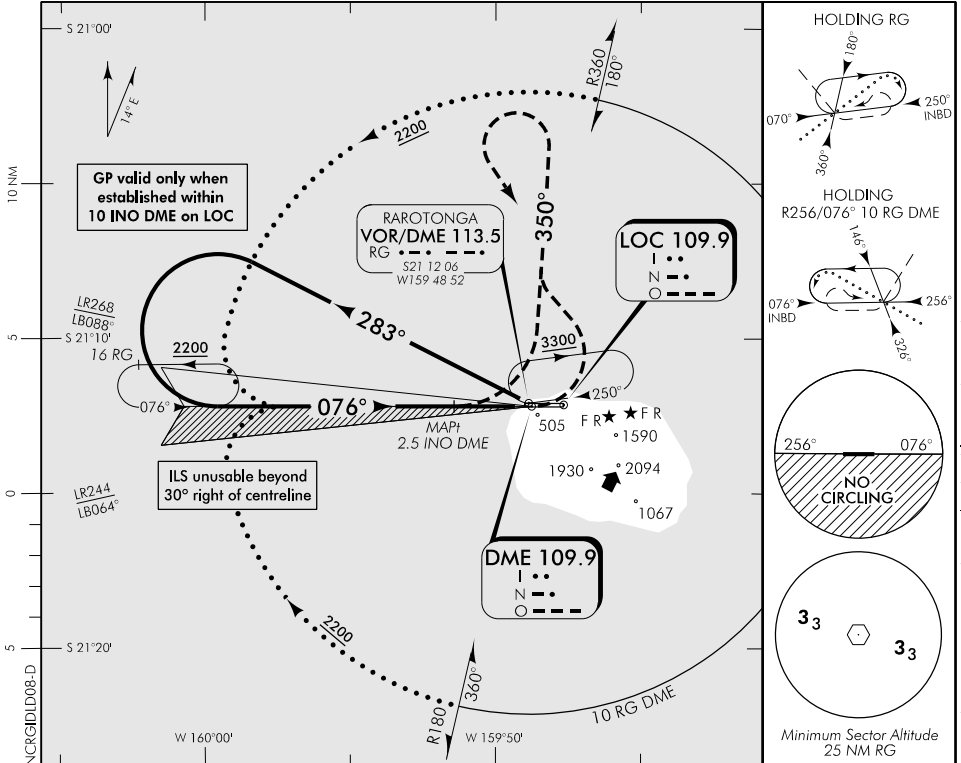
CAT A,B,C,D

**RAROTONGA**

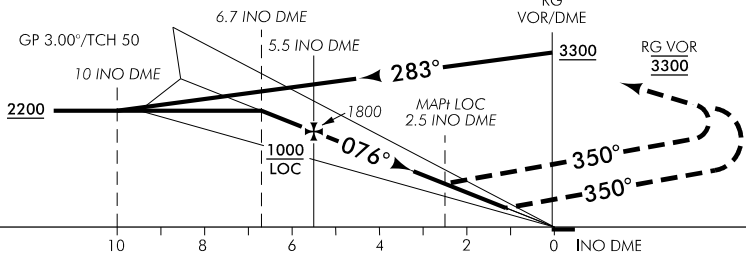
RWY 08 THR ELEV 19

**ILS/DME or LOC/DME RWY 08**

APPROACH AND AERODROME CONTROL RAROTONGA TOWER: 118.1 121.9



Use Rarotonga QNH



**MISSED APCH:** MAX IAS 185 kt. Turn LEFT, intercept R350 RG VOR, return to RG holding **3300**, or as instructed by ATC.

INO DME DIST	10	9	8	7	6	5	4	3	2.7	1.1
Advisory Altitude 3°	3290	2960	2620	2290	1960	1630	1310	980	MDA	DA
Category	A			B			C		D	
ILS/DME	380(361) – 2000						400(381) – 2000			
LOC/DME	820(801) – 5						960(941) – 5			
Circling Restricted *	860(841) – 5						960(941) – 5			
* Circling NA South of RWY 08/26										

Effective: 8 NOV 18

© Government of Cook Islands

**RAROTONGA**  
**ILS/DME or LOC/DME RWY 08**

Changes from 17 SEP 15: Procedure reviewed, minima, AD ELEV, advisory altitude table, missed approach.

ELEV 19

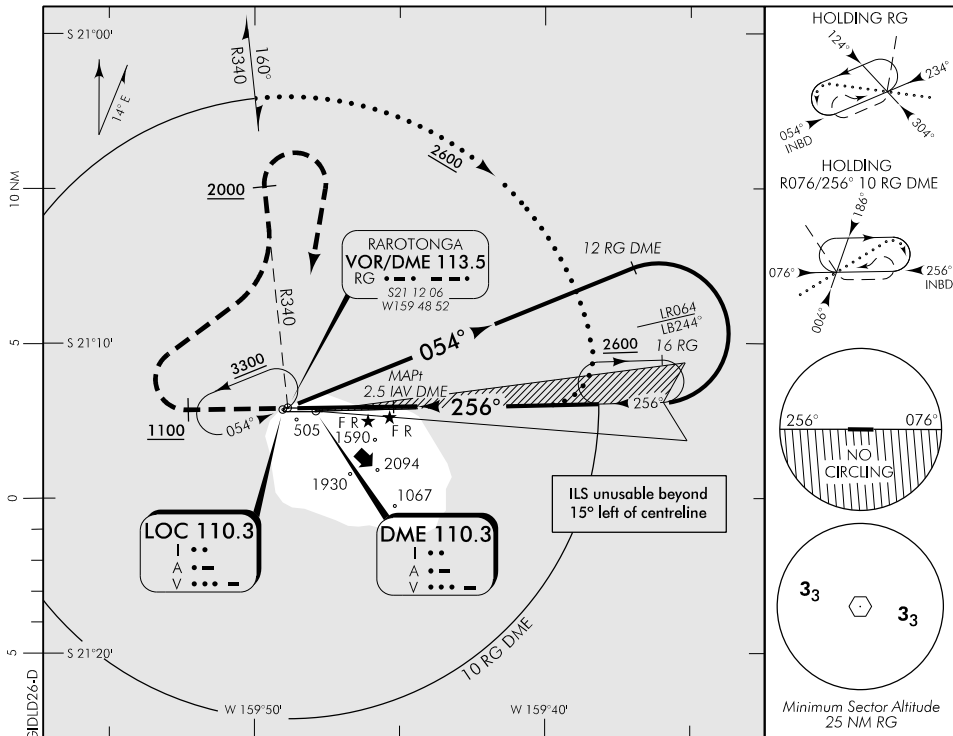
CAT A,B,C,D

**RAROTONGA**

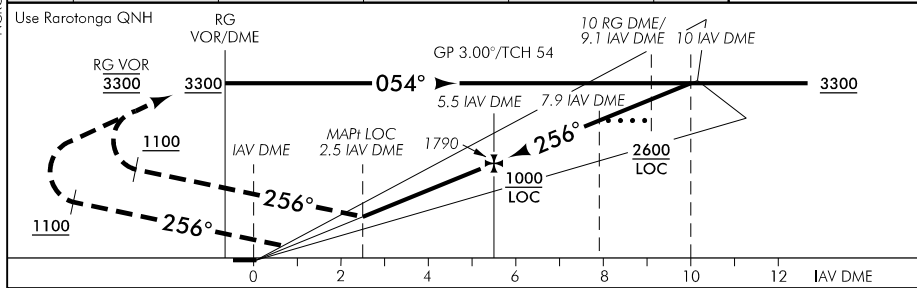
RWY 26 THR ELEV 14

**ILS/DME or LOC/DME RWY 26**

APPROACH AND AERODROME CONTROL RAROTONGA TOWER: 118.1 121.9



Changes from 8 NOV 18: DME depiction on profile updated.



**MISSED APCH:** MAX IAS 185 kt. Track 256° to 1100, turn RIGHT intercept R340 RG VOR to 2000, turn RIGHT direct to RG VOR 3300, or as instructed by ATC.

IAV DME DIST	0.8	2.6	3	4	5	6	7	8	9	10	11	12
Advisory Altitude 3°	DA	MDA	980	1300	1630	1960	2290	2620	2950	3290	3630	3960
Category	A			B			C			D		
ILS/DME	700(686) – 3700						730(716) – 3900					
ILS/DME *	280(266) – 1800											
LOC/DME	980(961) – 5											
LOC/DME *	830(811) – 4800											
Circling Restricted #	980(961) – 5											
* Missed approach minimum climb gradient 4.0% (250 ft/NM)						# Circling NA South of RWY 08/26						

**Effective: 31 JAN 19**

© Government of Cook Islands

**RAROTONGA**  
**ILS/DME or LOC/DME RWY 26**